



# 580 Pre-Installation Checklist

Thank you for being a Culligan customer! We are excited for your workplace to experience the great-tasting sparkling water from your new 580. Before our certified technician can install your machine, the following pre-installation requirements must be completed.

## Water Supply

- 3/8" potable cold water supply line that a Culligan technician can connect to
- Minimum water supply pressure 14.5 PSI, 1 gallon per minute minimum flowrate; Culligan technician will install a pressure reducer above 51 PSI
- Optional drain connection for the drip tray

## Electrical

- 115 VAC/60Hz/15 amp (standard 3-prong) GFCI protected electrical circuit
  - The chiller/carbonator draws 3.5 amps and the counter mounted tower draws 1 amp so the chiller/carbonator and counter mounted tower can be on the same circuit
- Electrical connections within 5' of machine location; **NO EXTENSION CORDS**

## Countertop Holes & Drain Line

- The chiller/carbonator must be installed in the cabinet directly below or directly adjacent to the tap head.
- The dispenser is 18" tall, ensure proper clearance between dispenser and any wall-mounted cabinets.
- If installed in an enclosed space, adequate ventilation must be provided.
  - 4" space on all sides (front, rear, left and right sides) and 8" minimum above the machine
  - The enclosed cabinet must allow air to flow through from bottom of the cabinet to the top

## CO2 Supply

- Full CO2 cylinder must be on-site before installation
  - If connecting to a bulk or existing CO2 system, a CO2 line terminating at a 1/4" barbed shutoff valve must be available within 40" of the installation site
  - Minimum CO2 pressure is 100 PSI

If you have any questions about the installation, call Customer Care at (787) 708-6986

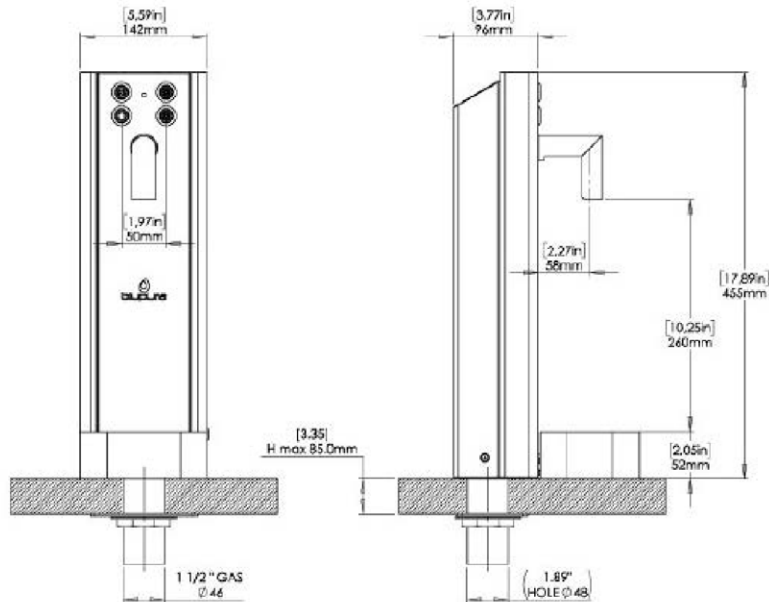


Talk to your dedicated  
Culligan Water Expert.

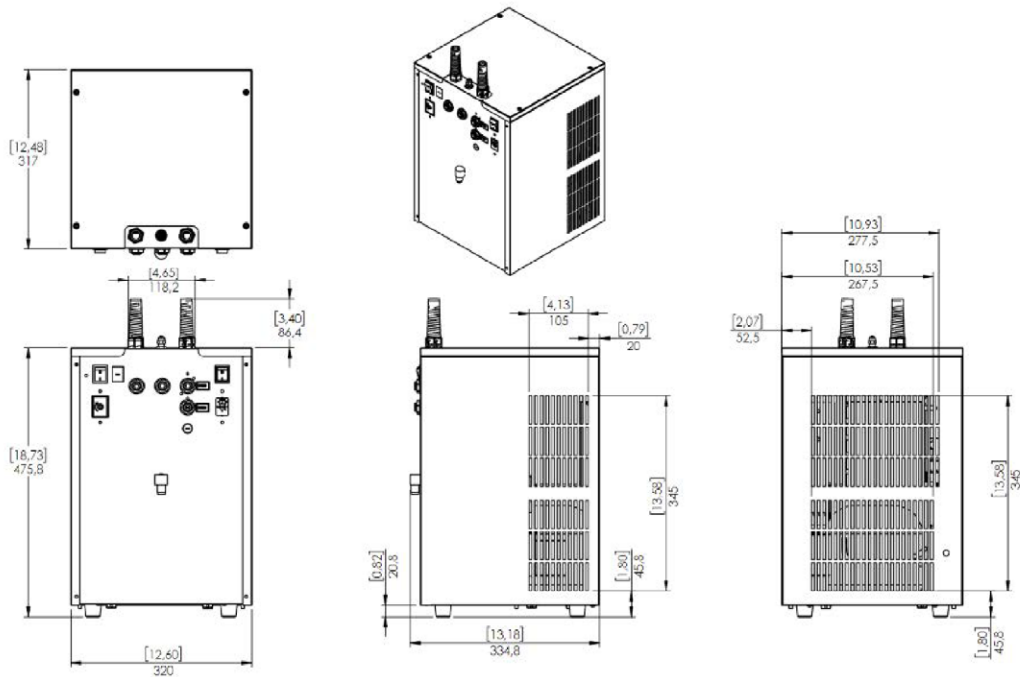
Phone  
(787) 708-6986

Website  
culligan.pr

## Water Supply & Shut Off



## Chiller/Carbonator Placement Drawing



Talk to your dedicated  
Culligan Water Expert.

Phone  
(787) 708-6986

Website  
[culligan.pr](http://culligan.pr)